



Issued February 2019

## VISA PAYWAVE TEST TOOL

### Who is it for?

Visa payWave Test Tool is an official Visa Europe test tool for Acquirers, Acquirer Processors, Terminal Manufacturers and Terminal Vendors who want to test contactless payment devices for Visa payWave acceptance.

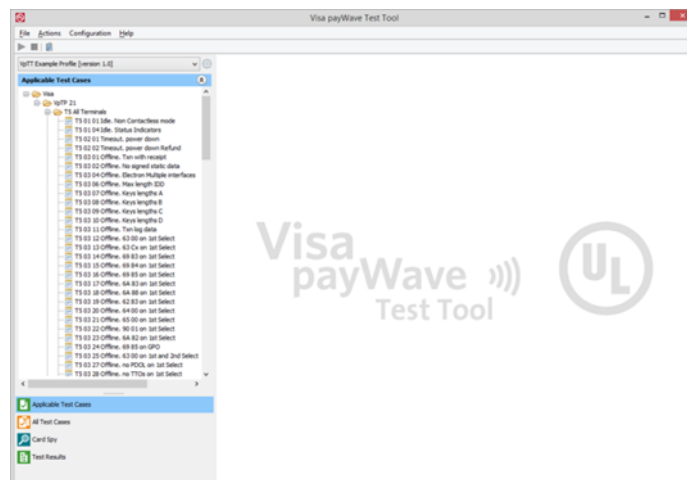
### Why do you need it?

The Visa payWave Test Tool performs the required and mandated tests as specified by Visa Europe before your payWave terminal can be deployed at the merchant's location. This verifies that the terminal can correctly handle Visa payWave cards (from all regions).

Visa payWave Test Tool provides a unique solution enabling you to validate the configuration of your Visa payWave terminals. The tool uses contactless card simulation and automatically generates the test report that you need to submit to Visa for evaluation

### What is inside?

The Visa payWave Test Tool is an official Visa Europe tool that covers all specifications of the formal Visa payWave Procedures. The user-friendly graphical interface enables you to carry out all tests in an efficient manner. Before each test, the tool displays a set of easy-to-follow on-screen instructions explaining the type of transaction that you need to perform, and guiding you towards the completion of the test case



### Key benefits

- Enables you to perform the Visa Europe mandated tests for contactless terminals
- User friendly test tool with easy-to-follow instructions
- Speed up your development and validation process
- Contactless card simulation, no physical cards needed
- The Visa payWave Test Tool is delivered as a complete and portable box including all software and hardware

# VISA PAYWAVE TEST TOOL

## Specifications

### Features

- Meet all specifications of the official Visa payWave Procedures
- Configurable for every terminal intended to be compliant with Visa payWave Procedures
- Simulation of required contactless test cards
- Optical and audio analyzing and validating mechanisms
- Flexible test management:
  - Store and view results per terminal profile
  - Repeat tests
  - Log test runs and results
- Automatic compliance report generation
- User-friendly GUI with clear results
- Contactless card spy functionality

### Reporting

- Automatically generated detailed test results
- Generate Test Report to submit to Visa:
  - .PDF format
  - .HTML format

### payWave Card-Terminal Analyzer

- Contactless card spy functionality
- Trace the communication between a real payWave card and a contactless reader/terminal
- Raw data interpretation including low level protocol communication

## Software & Hardware

### The complete package includes:

- Visa payWave Test Tool Software
- User Manual
- Visa payWave documentation:
  - Contactless Terminal Requirements and Implementation Guide (TIG) document
  - Visa payWave Test Procedures (VpTP) specification
- Two physical Contactless Test Cards for specific tests
- UL Light and Sound Detector
- UL SmartWave Box

### UL SmartWave Box

This hardware combined with the SmartWave Probe performs the contactless card simulation and communication capture.

- Simulate layer 3 and layer 4 behavior of contactless cards
- USB connection
- Radio frequency
  - Frequency: 13.56 MHz
  - Speeds: ~106, ~212, ~424, ~847

### UL Light and Sound Detector

This hardware is tailored for analyzing and validating optical and audio signals.

- Fiber optic cables with purpose built mounts for light detection
- Microphone for sound detection
- Adjust sensitivity for light and sound detection
- USB and USB-Host ports



For your sales enquiries, please contact us at [insecurity@ul.com](mailto:insecurity@ul.com), visit [ims.ul.com](http://ims.ul.com), or contact one of our resellers.

All rights reserved. It is not allowed to multiply, electronically save or publish (parts of) this document, in any form or manner (electronically, mechanically, photocopy etc.) without written approval in advance from UL. UL, the UL logo and the UL certification mark are trademarks of UL LLC © 2019