



Issued January 2019

UL CARD SIMULATOR

Who is it for?

UL Card Simulator is the most complete card simulation tool for Acquirers, Acquirer Processors, Merchants and Terminal Vendors that want to test the correct processing of payment transactions on payment devices.

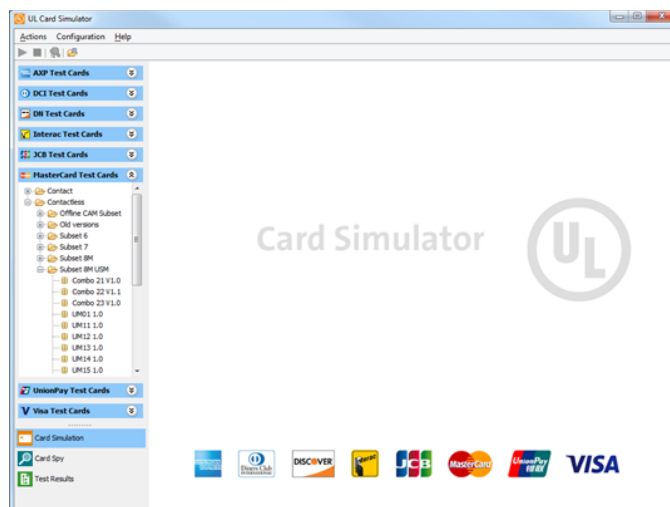
Why do you need it?

The UL Card Simulator simulates the real behavior of a contact or contactless EMV card without the need for any physical cards. It simplifies the terminal testing procedure in various ways, mainly by eliminating the dependency on EMV issuers and schemes for physical test cards.

What is inside?

UL Card Simulator is a state-of-the-art tool that can simulate any and all functions of an actual smart card, both contact and contactless. The tool simulates card profiles for all major payment schemes. It can simulate both correctly functional cards and faulty cards, which allows you to observe the terminal's behavior during a card transaction and whether it reacts in the correct way.

UL Card Simulator generates detailed and clear reports of any testing, including logs and interpretations of all technical data in commands and responses. The tool works in conjunction with the industry-proven hardware UL SmartLink Box (contact) and UL SmartWave Box (contactless) and UL SmartStripe (magnetic stripe).



Key benefits

- No physical cards necessary
- Eliminates the risk of lost, blocked or damaged cards
- Contact, contactless and magstripe real time card simulation
- Comprehensive reports giving insight into application logic
- Reduces time-to-market for POS/ATMs deployment
- Flexible and easy to use

UL CARD SIMULATOR

Specifications

Simulated cards

Simulation of cards includes:

- Mastercard Card Images for contact and contactless M-TIP (Subset 1, Field Interoperability Subset, Subset Maestro UK, Subset 6 Mastercard, Subset 8 PayPass and Subset M-TIP)
- Mastercard Card Images for Mastercard Interoperability subset (confidence) cards
- Mastercard Card Images for contact and contactless NIV (Subset 3, Subset 5 PIN Management, Subset 6 PayPass and Subset 7 PayPass)
- Visa contact ADVT Card Images and contactless CDET and ADVT-qVSDC Card Images
- American Express contact AEIPS and contactless Expresspay Card Images
- UnionPay Card Images
- JCB (TCI) Card Images
- Diners Club Card Images
- Discover Card Images
- Interac, DNA, and Pulse Card Images
- Magnetic Stripe images for brand testing

Available hardware

- Contact testing: UL SmartLink Box
- Contactless testing: UL SmartWave Box
- MagStripe testing: UL SmartStripe



For your sales enquiries, please contact us at insecurity@ul.com, visit ims.ul.com, or contact one of our resellers.

All rights reserved. It is not allowed to multiply, electronically save or publish (parts of) this document, in any form or manner (electronically, mechanically, photocopy etc.) without written approval in advance from UL. UL, the UL logo and the UL certification mark are trademarks of UL LLC © 2019