



Issued May 2019

## UL BRAND TEST TOOL

### Who is it for?

UL Brand Test Tool is the most complete test tool for Acquirers, Processors, Terminal Vendors and Merchants that want to validate their payment devices before connecting to the major payment networks.

### Why do you need it?

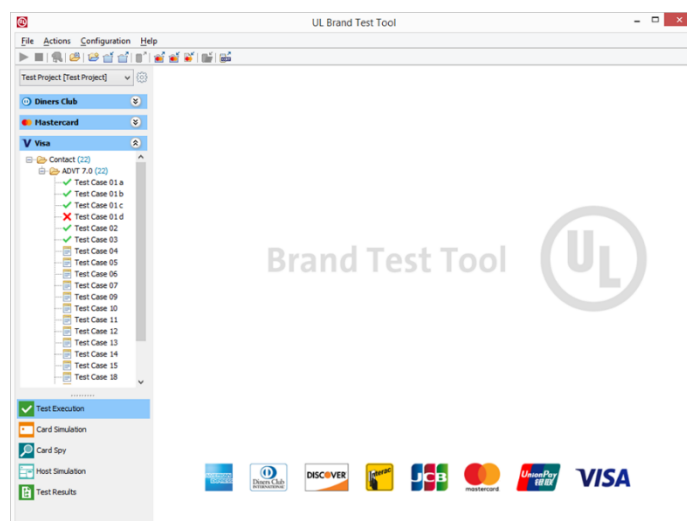
All payment schemes mandate proper testing before allowing payment devices to be connected to their network infrastructure. The ultimate goal of these tests is to ensure interoperability and to have an EMV-compliant, payment association-certified terminal that can perform trouble-free transactions within your payment infrastructure.

UL Brand Test Tool assists you in easily and successfully performing the brand testing processes required.

### What is inside?

UL Brand Test Tool has all mandatory tests implemented for Point of Sale (POS) terminals, Mobile POS (MPOS) devices, Automated Teller Machines (ATM), Vending machines and other payment devices.

It has been qualified and/or confirmed by Visa, Mastercard, American Express, Discover / Diners Club, UnionPay (international and domestic) and JCB, and by the debit networks Interac, DNA and Pulse.



### Key benefits

- One brand certification tool for all major payment brands
- Always up-to-date with the latest specification
- On-screen user guidance when performing tests
- Supports all card simulations for EMV-in-transit
- Integrated with M-TIP and ADVT test processes
- Includes UL Card Simulator and UL Card Spy
- Optional Host Simulator Module that allows you to set the host configuration parameters at your discretion
- Optional Test Automation Module that allows to create a fully automated terminal test environment in combination with your proprietary test environment

# UL BRAND TEST TOOL

## Specifications

### Test automation for payment brands

Includes test cases for:

- Mastercard M-TIP, contactless PayPass M-TIP and Mastercard M/Chip Fast
- Visa ADVT, ADVT-qVSDC, CDET and Visa Quick Chip
- American Express ICC Payment specification (AEIPS) for contact, Expresspay for contactless and American Express Quick Chip
- UnionPay IC Card Test Guide for Acquirers
- JCB Terminal Check for Implementation (TCI)
- Diners Club International Acquirer E2E
- Discover Network Acquirer E2E and Discover Quick Chip
- Interac Terminal FTT
- DNA Terminal Certification POS Pin Debit E2E
- PULSE POS Pin Debit End-to-End and PULSE ATM End-to-End

The latest specification versions are always supported.

### Simulated cards

Simulation of cards includes:

- Mastercard Card Images for contact and contactless M-TIP (Subset 1, Field Interoperability Subset, Subset Maestro UK, Subset 6 Mastercard, Subset 8 PayPass and Subset M-TIP)
- Mastercard Card Images for Mastercard Interoperability subset (confidence) cards
- Mastercard Card Images for contact and contactless NIV (Subset 3, Subset 5 PIN Management, Subset 6 PayPass and Subset 7 PayPass)
- Visa contact ADVT Card Images and contactless CDET and ADVT-qVSDC Card Images
- American Express contact AEIPS and contactless Expresspay Card Images
- UnionPay Card Images
- JCB (TCI) Card Images
- Diners Club Card Images
- Discover Card Images
- Interac, DNA, and Pulse Card Images
- Magnetic Stripe images for brand testing

### Special features

- Clear user guidance support during all steps in the test process.
- Card simulation without physical cards for contact, contactless, and magstripe.
- Allows transaction performance testing.
- Allows automatically populating the Mastercard M-TIP Test Report and Visa CCRT XML report file.
- Supports all card simulation needed for testing EMV-in-transit, as defined by the payment brands.

### Hardware

Included:

- UL SmartLink Box (Contact)
- UL SmartWave Box (Contactless)
- or
- UL SmartConnect (Contact and Contactless)

Optional:

- UL SmartStripe (MagStripe)



# UL BRAND TEST TOOL

## Optional Modules

### UL Host Simulator Module

UL Brand Test Tool's Host Simulator Module allows you to perform terminal tests using your own test scenarios and set the host configuration parameters at your discretion. The UL BTT is set up by simulating the Card at one end and the Authorization Host at the other. The module supports protocols such as VisaNet, Mastercard BankNet, APACS 70, ISO 8583, and AS2805.

The host simulation for Visa and Discover has been qualified and test results can be used as part of the certification. For Mastercard and AmEx, the UL BTT Host Simulator can be used for pre-certification.

### UL ATM Certification Module

The ATM Certification Module for UL Brand Test tool offers the best approach for Acquirers, Processors, and ATM Vendors for testing and certification of ATMs.

This module comes with physical cards ensuring that the security shutter of the motorized reader does not prevent from successful testing of a production ATM using UL BTT. These cards work in conjunction with a PC/SC contactless card reader.

The ATM Certification Module is qualified by Mastercard, Visa, American Express, Discover, Diners Club, UnionPay and JCB).

### UL Mobile Payments Module

The UL Mobile Payments Module allows you to test whether your payment infrastructure is ready to accept mobile payments.

This module simulates the behavior of mobile payment wallets. One of its main features is the possibility to test how your terminal behaves when Mobile CVM is required. It also allows you to test whether your terminal correctly processes mobile transactions by payment applications of major brands, such as American Express, Discover, Mastercard, UnionPay and VISA.

### UL Integrated Test Automation Module

The UL Integrated Test Automation Module allows to create a fully automated terminal test environment for terminal testing combining the power of the Brand Test Tool with your proprietary test automation environment.

The module is linked to your test automation environment using a TCP/IP connection. The test cases implemented in UL Brand Test Tool are run by triggering card simulation using the UL SmartLink Box, UL SmartWave Box, and/or UL SmartStripe. Your test environment is instructed on which test procedure to trigger, on which type of magstripe card to simulate (if applicable for the test case), and on any POS user interface checks that must be done. The tool evaluates test case results and reports these results back to your Test Automation Environment. In this way, you completely automate your test execution.

### UL Brand Test Tool for UnionPay

UL also offers a Brand Test Tool dedicated for UnionPay terminal certification. UL Brand Test Tool for UnionPay is the most complete test tool for Acquirers, Acquirer Processors, Merchants and Terminal Vendors that want to validate payment devices before connecting to the UnionPay payment network in China. It has all mandatory test cases for UnionPay implemented for POS terminals for contact, POS terminals for contactless, ATM for contact and ATM for contactless.



For your sales enquiries, please contact us at [imsecurity@ul.com](mailto:imsecurity@ul.com), visit [ims.ul.com](http://ims.ul.com), or contact one of our resellers.

All rights reserved. It is not allowed to multiply, electronically save or publish (parts of) this document, in any form or manner (electronically, mechanically, photocopy etc.) without written approval in advance from UL. UL, the UL logo and the UL certification mark are trademarks of UL LLC © 2019